



# THE GLOBAL IMPACT ACCELERATOR

**Invest in Impact**

***Ready. Connect. Scale.***

[www.human-planet.com](http://www.human-planet.com)



# Meet Our Speakers



**FLORIAN KEMMERICH**

Chief Executive Officer  
KOIS



**CYNTHIA SMITH**

Director of Global Initiatives  
Humentum



**HAREESH NAIR**

Chief Investment Officer  
TPC Group



**GLORIA SOMA**

Executive Director  
Titi Foundation



**CHRISTIAN MEYER ZU NATRUP**

Managing Partner  
Human Planet



**SANDRINE HENTON**

Managing Director  
EG Capital

# It never really worked...



Humanitarian shortfall  
US\$35bn (source: UN  
OCHA, 2023 Global  
Humanitarian Overview).  
70% of humanitarian needs  
are unmet (before USAID  
scrapping)



Pre-pandemic unmet  
development needs  
to meet SDGs in  
developing countries  
alone is  
US\$2.5trillion.



The IPCC estimates  
that “trillions of dollars  
in global energy and  
infrastructure  
investments” is needed  
to limit warming to 2°C.

We need a better way to finance this. How? >>>

## Bridging the disconnect

## Disconnect

Short-term humanitarian needs vs. investor return horizons

Use blended finance to align urgent impact with sustainable returns

Qualitative language (e.g. “lives improved”) vs. quantitative metrics “IRR/ROI”

Adopt standardized impact frameworks (e.g., IRIS+, SDGs) & communicate transparently about projects

High-risk perception in fragile contexts

De-risk via guarantees, first-loss capital, and co-financing

Donor-driven grants vs. equity/debt expectations


Create layered finance vehicles blending philanthropic and commercial capital

Minimal interaction between humanitarian & development actors and investors

Structurally bring these two worlds together

Limited metrics translating social impact to financial value

Provide transparent, standardized reporting for both returns and impact



# Closing the disconnect

# The Impact Accelerator

A team of humanitarian, development & climate professionals, investment advisory and blended finance professionals

## READY

A structured process to get impact project investment ready

## SCALE

Following investment we continue to provide follow up investments & technical assistance



STEP 1



STEP 2



STEP 3

## CONNECT

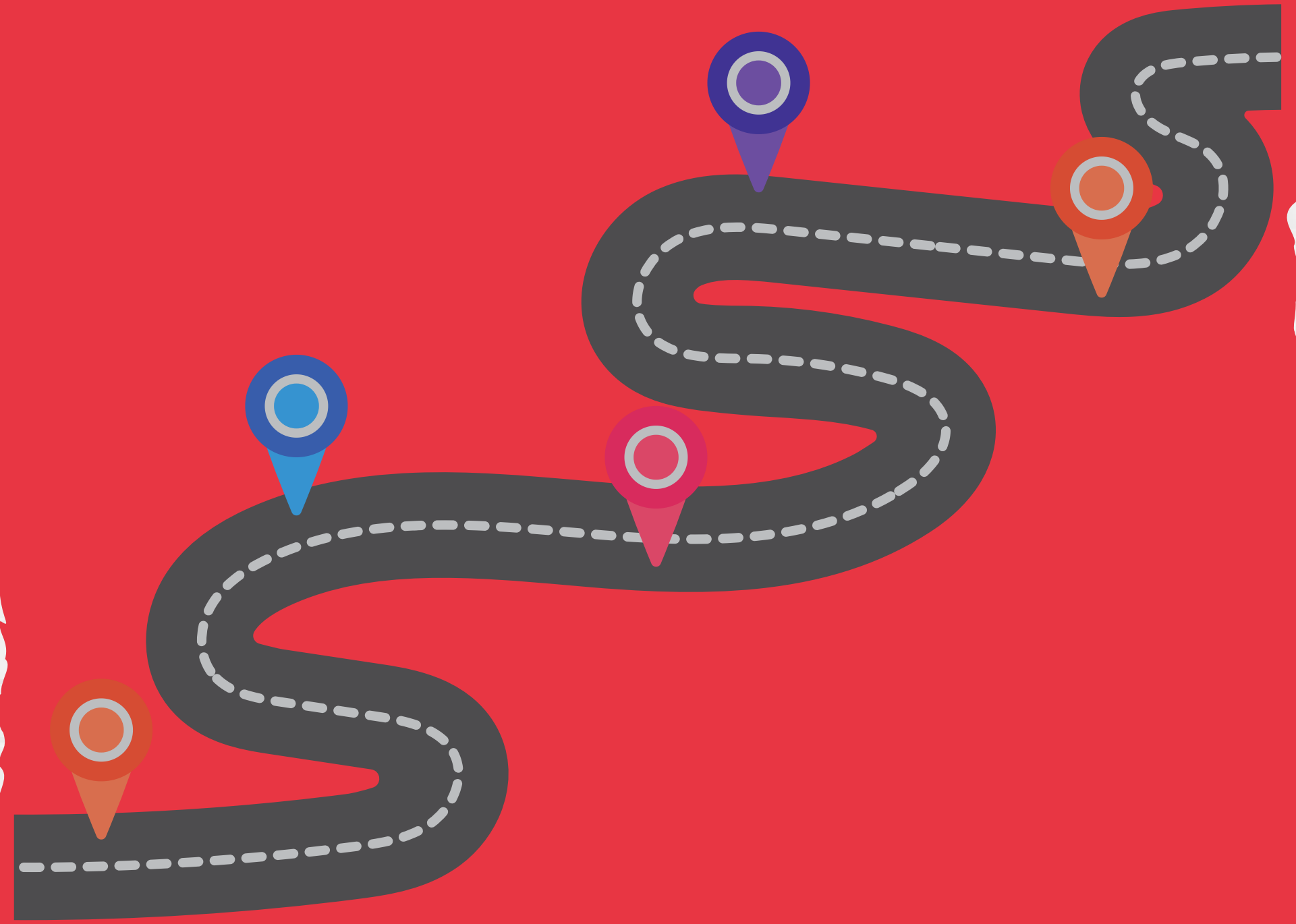
Every 3-4 months we convene investors & project leads to connect, present and invest in a “Dragons Den” style event



# ***The changing funding & opportunity landscape***



# The Role of Impact Finance in Humanitarian & Social Sectors





# STRENGTHENING COLLABORATION

*Ready. Connect. Scale.*

[www.human-planet.com](http://www.human-planet.com)

